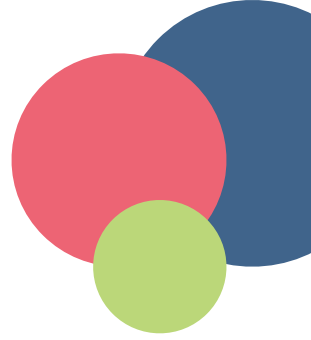


# KidMed

## Dosing Charts



### Tylenol (acetaminophen) Dosing Chart

May be given every 4-6 hours as needed

Weight	Liquid 160 mg / 5 ml	Chewable 160 mg	Tablet 325 mg
7-11 pounds	1.25 ml	-	-
12-17 pounds	2.5 ml	-	-
18-23 pounds	3.75 ml	-	-
24-45 pounds	5 ml	1 tablet	-
36-47 pounds	7.5 ml	1.5 tablets	-
48-70 pounds	10 ml	2 tablets	1 tablet
71-95 pounds	15 ml	3 tablets	1.5 tablets
96+ pounds	20 ml	4 tablets	2 tablets

### Advil/Motrin (ibuprofen) Dosing Chart

May be given every 6-8 hours as needed to children 6 months and older

Weight	Infant Liquid 50 mg / 1.25 ml	Children's Liquid 100 mg / 5 ml	Chewable 100 mg	Tablet 200 mg
12-16 pounds	1.25 ml	2.5 ml	-	-
17-21 pounds	1.87 ml	3.75 ml	-	-
22-32 pounds	2.5 ml	5 ml	1 tablet	-
33-43 pounds	3.75 ml	7.5 ml	1.5 tablets	1 tablet
44-54 pounds	-	10 ml	2 tablets	1 tablet
55-66 pounds	-	12.5 ml	2.5 tablets	1.5 tablets
67-76 pounds	-	17.5 ml	3 tablets	1.5 tablets
88+ pounds	-	20 ml	3.2 tablets	2 tablets



## Benadryl (diphenhydramine) Dosing Chart

May be given every 6-8 hours as needed to children 6 months of age and older - consult provider before giving Benadryl to any child under the age of 2

Weight	Liquid 12.5 / 5 ml	Chewable 12.5 mg	Tablet /Capsule 25 mg
8-11 pounds	1.5 ml	-	-
12-19 pounds	2.5 ml	0.5 tablet	-
20-24 pounds	4 ml	0.5 tablet	-
25-37 pounds	5 ml	1 tablet	0.5 tablet
38-49 pounds	7.5 ml	1.5 tablets	0.5 tablet
50-74 pounds	10 ml	2 tablets	1 tablet/cap
75-99 pounds	15 ml	3 tablets	1.5 tablets
100+ pounds	20 ml	4 tablets	2 tablets/caps

If you have any concerns or questions,  
please feel free to reach out to us.

KidMed

252.364.4690

1165 Cedar Point Boulevard, Suite F  
Cedar Point, NC 28584  
kidmednc.com

